

Quantifying CO emissions from boreal wildfires by assimilating TROPOMI and TCCON observations

Sina Voshtani et al.

Correspondence to: Sina Voshtani (voshtani.sina@gmail.com; sina.voshtani@utoronto.ca)

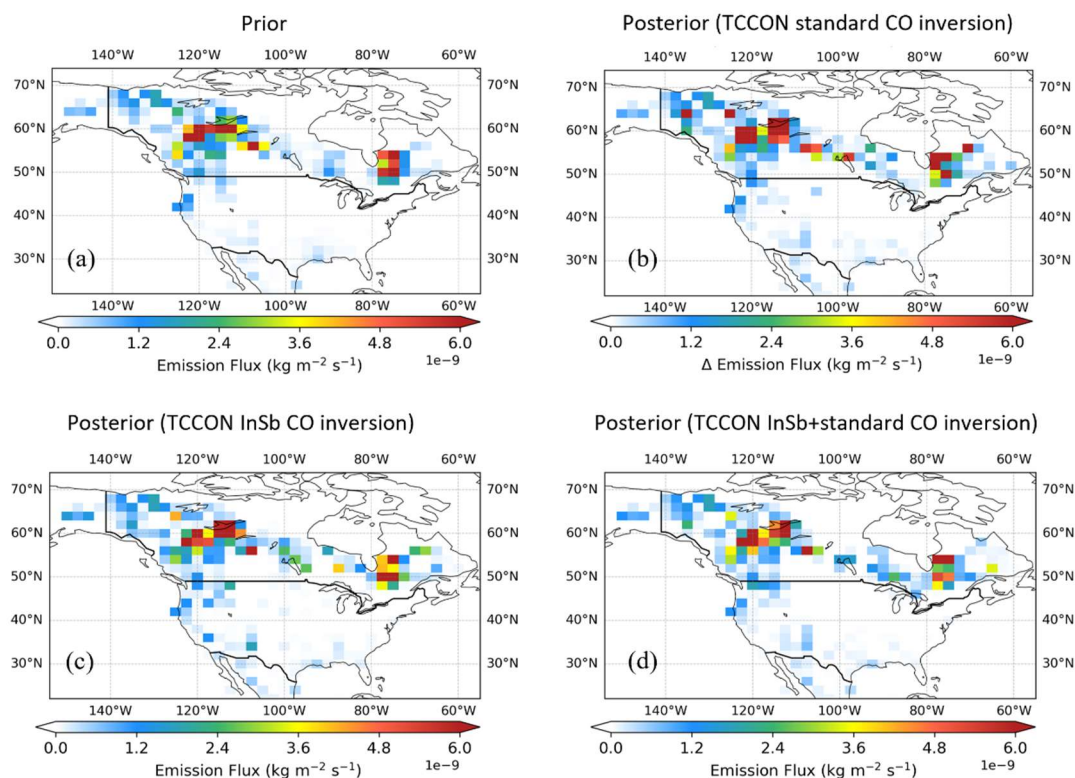


Figure S1. Comparison of the spatial distribution of the time-averaged (May-September) biomass burning CO emissions from CFFEPS in the (a) a priori model, (b) a posteriori using TROPOMI and standard TCCON, (c) a posteriori using TROPOMI and InSb TCCON, and (d) a posteriori using TROPOMI plus TCCON standard and TCCON InSb data.